

DESIGN

TEMPERATURE WATCHER / TEMPERATURE CONTROLLER

TEMPERATURE LIMITER

Type

KO Break Contact
KS Make Contact
Plastic

CO Break Contact
CS make Contact
Ceramic

KB break Contact
Plastic

CB Break Contact
Ceramic

Base material

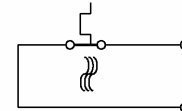
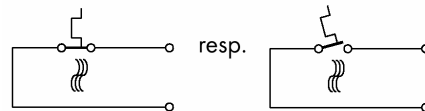


Function

Breaks respectively makes an electrical contact with temperature increase
Closes respectively opens automatically with temperature decrease

Breaks an electrical contact with temperature increases
Closes by hand reset only

Diagram



Voltage

Up to 250 V AC

Up to 400 V AC

Up to 250 V AC

Up to 400 V AC

Switching cycles Switching capacity

100,000 x cycles 10 A
10,000 x cycles 16 A

Up to 10,000 / 16 A

Up to 10,000 x cycles 16 A

Min. current Max current

50 mA
16 A
Others on request

50 mA
16 A
Others on request

Contact resistance

$\geq 25 \text{ m}\Omega$
Other values or gold plated contacts on request

$\geq 25 \text{ m}\Omega$
Other values or gold plated contacts on request

Dielectric strength terminal to cap

2000 V_{eff}, 50 Hz

2000 V_{eff}, 50 Hz

Over broken contacts

500 V_{eff}, 50 Hz

500 V_{eff}, 50 Hz

Tracking resistance of base material

PTI $\geq 250 \text{ V}$

PTI $\geq 250 \text{ V}$

Operating temp range fixed set

-5° up to 180° C

-5° up to 180° C

Tolerance

$\pm 5 \text{ bis } \pm 10 \text{ K}$
 $\pm 3 \text{ K}$ other values on request

$\pm 5 \text{ bis } \pm 10 \text{ K}$
 $\pm 3 \text{ K}$ other values on request

Standard differential

Up to 40 K below the min switching temp limit
Lowest limit 30° C
Other values on request
0.5 K/min

Up to 40 K below the min switching temp limit
Lowest limit 30° C
Other values on request
0.5 K/min

Min. rate of temp rise

Application conditions

Temp limit of fastening
surface and plastic parts

TS 200° C

TS 300° C

TS 200° C

TS 300° C

Ambient temperature
range

-20° C up to 165° C
Resp. 200° C
Depending on location and current value

-20° C up to 165° C
Resp. 200° C
Depending on location and current value

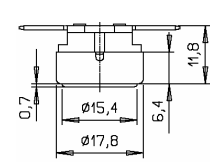
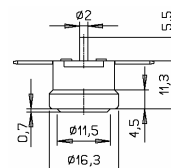
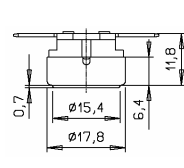
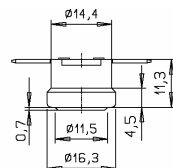
Protection degree of base

IP 40

IP40

IP 10

Dimensions



Certification

VDE / UL SEMKO

VDE

VDE / UL SEMKO

VDE