

## OPERATION-TEMPERATURE-LIMITER

**SO** Break contact

Plastic

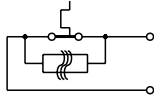


**CSO** Break contact

Ceramic



Breaks an electrical contact with temperature increase .  
Re-closes after being disconnected from the mains only  
(electrical self-holder realized by a heating resistor installed parallel to the contact)



up to 250 V AC

3.000 cycles / 16 A

50 m A  
16 A  
others on request

$\leq 25 \text{ m } \Omega$   
others values or gold plated contacts on request

2.000  $V_{\text{eff}}$ , 50 Hz

500  $V_{\text{eff}}$ , 50 Hz

PTI  $\geq 250 \text{ V}$

- 5° up to 180° C  
others on request

$\pm 5$  bis  $\pm 10 \text{ K}$   
 $\pm 3 \text{ K}$  and other values on request

up to 40 K below the min switching temperature limit  
lowest limit 30° C  
other values on request

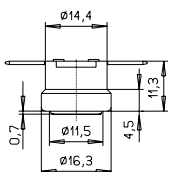
0,5 K/min

TS 200° C

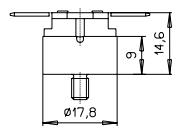
- 20° C up to 165° C  
resp. 200° C

depending on location and current value

IP 40



VDE / UL



VDE

## TEMPERATURE WATCHER/ TEMPERATURE CONTROLLER

**KB** Break Contact

Plastic

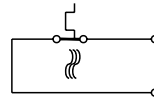


**CB** Break Contact

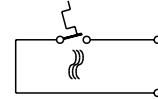
Ceramic



Breaks resp. makes contact with temperature increase.  
Makes resp. breaks automatically with temperature decrease.



resp.



up to 50 V AC/DC

up to 30.000 cycles / max. 120 W

50 m A  
8 A  
others on request

$\leq 25 \text{ m } \Omega$   
others values or gold plated contacts on request

-

500  $V_{\text{eff}}$ , 50 Hz

PTI  $\geq 250 \text{ V}$

- 5° up to 135° C  
others on request

$\pm 5$  bis  $\pm 10 \text{ K}$   
 $\pm 3 \text{ K}$  and other values on request

up to 40 K below the min switching temperature limit  
lowest limit 30° C  
other values on request

0,5 K/min

TS 140° C

- 20° C up to 140° C

IP 54

